

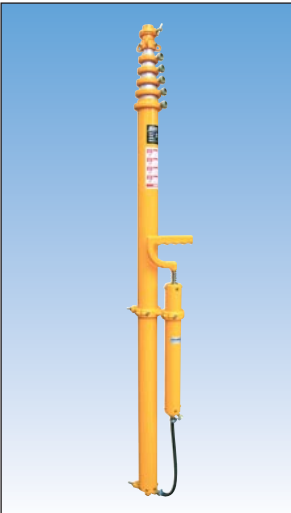


CLARK MASTS™



**AN INTRODUCTION TO
THE CLARK MASTS RANGE OF FAST ERECTING
AIR-OPERATED, MECHANICAL, TELESCOPIC
AND SECTIONAL MAST SYSTEMS**

THE CLARK MASTS RANGE OF FAST ERECTING MASTS



QT MASTS

THE HANDY LIGHTWEIGHT MAST WITH 101 USES

Air handpump operated telescopic QT Series masts are used for lifting antennas, sound measurement, air pollution monitoring equipment and a great variety of other apparatus which do not need to be turned.



ST MASTS

THE SMALL MAST WITH RUGGED CONSTRUCTION

The ST Series of telescopic masts has a 3" base tube and is similar to the PT Series, though smaller in diameter and headload capacity. Turnable after extension. Ideal for vehicle mounted applications where the headload to be lifted is neither heavy nor bulky.



MT MASTS

QUICK AND EASY TO EXTEND AND RETRACT

Clark Masts MT range of masts offers a 4" base tube and a compact retracted to extended height ratio which results in a strong 1 1/2" or 2" top section able to support headloads of between 10 to 20 kg dependent on required extended height. Available in locking clamp collar variant only.



DAF MASTS

THE SELF-CONTAINED, EASILY TRANSPORTED, LIGHT, FIELD MAST

The DAF Series of masts incorporates mast units from the ST Series. There are five models in the range - all come supplied as a complete kit for fast, easy deployment by one person. The mast has a handpump attached and four adjustable legs which fold for easy transportation.



PT MASTS

THE ORIGINAL TELESCOPIC CLARK MAST

The PT Series mast features heavy anodised aluminium alloy construction and keyed sections enabling the mast to be turned. The PT mast can be equipped with a fixed base for static air connection. Ideal for organisations involved in field strength measurement or radio reporting cars.



YT MASTS

RIGID WHEN EXTENDED, COMPACT WHEN RETRACTED

The YT Series is a development of the PT. It features a 5" diameter base tube which makes the load and height capacity slightly more than the 4.5" diameter PT Series. Both series are available with plain guide collars for low retracted height or locking collars for long periods extended. There is a very full range of accessories for easy installation in a wide variety of vehicles.

CLARK MASTS HAVE BEEN DEDICATED TO DESIGN AND MANUFACTURE OF A WIDE RANGE OF MECHANICAL, SECTIONAL, TELESCOPIC AND AIR-OPERATED MAST SYSTEMS SINCE 1957.



WT MASTS

THE HEAVY-WEIGHT MAST REACHING 30 METRES

WT masts have greater strength and can reach greater heights by virtue of their 6" diameter base tube. With a maximum of 30 metres, most WT series masts in mobile roles have to be transported in the horizontal position. Various roof trolley systems are available.



XT MASTS

THE MOST POWERFUL MAST IN THE RANGE

The advantage of the XT Series masts is their stability unguyed. They have the power to lift up to 130 kg. Built into or on the vehicle in vertical position. They have the rigidity which has become essential for much of today's communication equipment.



TRAILER MASTS

TRAILER MOUNTED TELESCOPIC MASTS

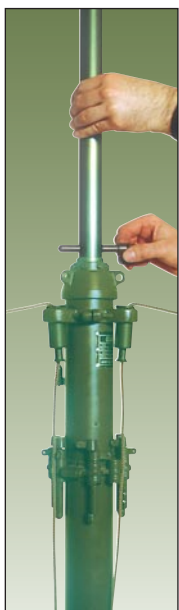
With the optional equipment now offered, Series 802 and 804 are truly a most valuable, flexible and economical tool for all those needing to raise radio antennas and other apparatus up to 30m for short periods. Example : the location of mobile phone system antennas.



TYPE 73 MASTS

VERTICALLY ERECTED SECTIONAL MASTS

Main features such as the aluminium alloy mast sections, the winch system which controls the guys during erection, the 3-legged erection gear and the mast lifting hoist have made the TYPE 73 classic since 1970.



PU MASTS

SIMPLE IN CONCEPT, SOPHISTICATED IN DETAIL

The unique feature of PU hand extended telescopic masts is the cross-pin used to lock extended sections. PU masts may be used field or vehicle mounted in every environment.



SCAM MASTS

RUGGED AIR-OPERATED TELESCOPIC MASTS

There are 35 years of military service behind every SCAM mast. Ideally vehicle mounted, their weight also gives stability when standing in the field. Now finding new uses lifting modern surveillance devices.



SERIES 90 MASTS

THE BIG-LIFTER UP TO 40 METRES

This sectional mast lifts 100 kg antenna loads up to 40m with great stability and safety. It uses a 4-legged erection gear and centrally controlled guys at 90°. It is possible to erect a number of masts with a single set of erection equipment.

CLARK MASTS – FAST ERECTING MAST SYSTEMS



Plain Collar Mast
(Plain collar version-P)



Clamp Collar Mast
(Clamp collar version-C)



Rotatable Base
(Turning version-T)



Fixed Base
(Non-turning version-N)

Light-Weight Masts

QT Masts		
Model	Extended Height	Maximum Headload
QT4-6/HP	4.25 m	4.5 kg
CQT4-6/HP	4.25 m	4.5 kg
SQT4-7/HP	4.00 m	6.0 kg
CSQT4-7/HP	4.00 m	6.0 kg
QT6-6/HP	6.10 m	4.5 kg
CQT6-6/HP	6.10 m	4.5 kg
QT6-4/HP	6.10 m	10.0 kg
CQT6-6/HP	6.10 m	10.0 kg
SQT6-6/HP	7.95 m	10.0 kg
CSQT6-6/HP	7.95 m	10.0 kg
QT9-6/HP	9.00 m	4.5 kg
CQT9-6/HP	9.00 m	4.5 kg
SQT9-6/HP	8.80 m	10.0 kg
CSQT9-6/HP	8.80 m	10.0 kg
QT10-6/HP	10.00 m	4.5 kg
CQT10-6/HP	10.00 m	4.5 kg
SQT10-6/HP	10.15 m	10.0 kg
CSQT10-6/HP	10.15 m	10.0 kg
SQT12-8/HP	11.55 m	2.5 kg
CSQT12-8/HP	11.55 m	2.5 kg
SQT12-6/HP	12.20 m	10.0 kg
CSQT12-6/HP	12.20 m	10.0 kg
SQT15-7/HP	15.00 m	2.5 kg
CSQT15-7/HP	15.00 m	2.5 kg
QTX15-7/HP	15.00 m	10.0 kg
CQTX15-7/HP	15.00 m	10.0 kg

Light to Middle-Weight Masts

ST and STX Masts		
Model	Extended Height	Maximum Headload
STX-3 section masts		
STX25-3	2.51 m	30.0 kg
STX35-3	3.51 m	30.0 kg
STX45-3	4.51 m	25.0 kg
STX55-3	5.51 m	25.0 kg
STX65-3	6.51 m	25.0 kg
STX75-3	7.51 m	20.0 kg
STX90-3	9.01 m	20.0 kg

ST-4 section masts

ST45-4	4.51 m	20.0 kg
ST55-4	5.50 m	20.0 kg
ST65-4	6.50 m	15.0 kg
ST75-4	7.50 m	15.0 kg
ST90-4	9.00 m	15.0 kg

Light to Middle-Weight Masts

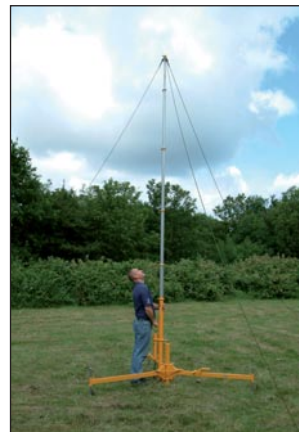
MT Masts		
Model	Extended Height	Maximum Headload
5 section masts		
MT6-5	6.00 m	30.0 kg
MT9-5	9.00 m	25.0 kg
MT10-5	10.00 m	25.0 kg
MT12-5	12.00 m	20.0 kg
MT16-5	16.00 m	15.0 kg
6 section masts		
MT9-6	9.00 m	15.0 kg
MT10-6	10.00 m	15.0 kg
MT12-6	12.00 m	12.0 kg
MT16-6	16.00 m	10.0 kg

DAF SERIES

Model	Extended Height	Maximum Headload
DAF 45	4.50 m	15.0 kg
DAF 55	5.50 m	12.0 kg
DAF 65	6.50 m	10.0 kg
DAF 90	9.00 m	7.5 kg
DAF 120	12.00 m	5.0 kg

Standard-Weight Masts

PT Masts		
Model	Extended Height	Maximum Headload
4 section masts		
PT30-4	3.00 m	60.0 kg
PT35-4	3.50 m	60.0 kg
PT12-4	4.17 m	55.0 kg
PT50-4	5.00 m	55.0 kg
PT55-4	5.50 m	55.0 kg
PT5-4	6.17 m	55.0 kg



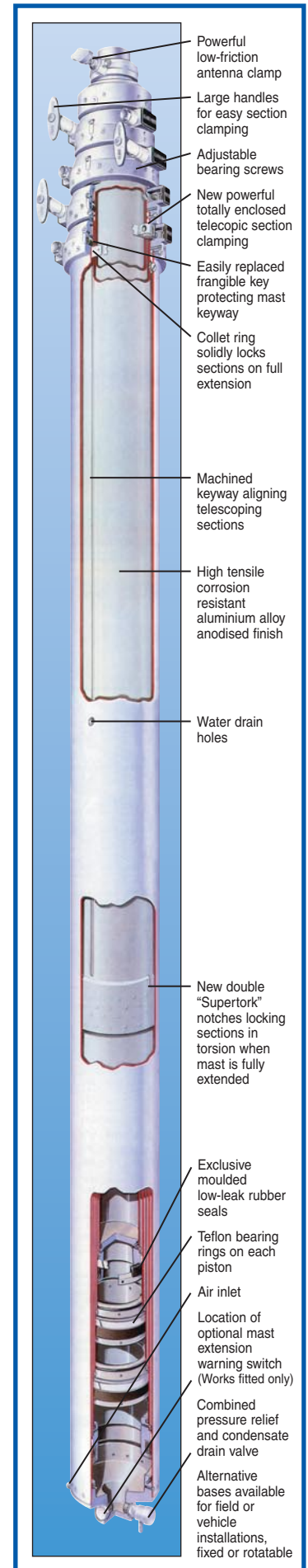
5 section masts		
PT40-5	4.00 m	50.0 kg
PT45-5	4.50 m	50.0 kg
PT15-5	5.07 m	40.0 kg
PT55-5	5.50 m	40.0 kg
PT34-5	6.77 m	40.0 kg
PT75-5	7.50 m	35.0 kg
PT80-5	8.00 m	35.0 kg
PT90-5	9.00 m	35.0 kg
PT120-5	12.00 m	25.0 kg
PT150-5	15.00 m	25.0 kg
PT13-5	18.37 m	25.0 kg
6 section masts		
PT50-6	5.00 m	30.0 kg
PT16-6	6.07 m	30.0 kg
PT14-6	7.57 m	25.0 kg
PT90-6	9.00 m	25.0 kg
PT11-6	10.07 m	25.0 kg
PT4-6	12.37 m	20.0 kg
PT8-6	15.37 m	20.0 kg
7 section masts		
PT40-7	4.00 m	20.0 kg
PT50-7	5.00 m	20.0 kg
PT60-7	6.00 m	15.0 kg
PT54-7	6.77 m	15.0 kg
PT9-7	9.07 m	12.0 kg
PT1-7	10.76 m	12.0 kg
PT120-7	12.00 m	10.0 kg
PT150-7	15.00 m	10.0 kg
PT3-7	18.37 m	10.0 kg
PT6-7	21.07 m	10.0 kg
8 section masts		
PT17-8	10.07 m	9.0 kg

Standard to Heavy-Weight Masts

YT Masts		
Model	Extended Height	Maximum Headload
7 section masts		
YT80-7	8.00 m	25.0 kg
YT90-7	9.00 m	25.0 kg
YT10.5-7	10.57 m	25.0 kg
YT120-7	12.07 m	20.0 kg
YT150-7	15.00 m	15.0 kg
YT21-7	21.00 m	15.0 kg
8 section masts		
YT9-8	8.57 m	15.0 kg
YT12-8	12.07 m	12.0 kg
YT15-8	15.07 m	10.0 kg

Heavy-Weight Masts

WT Masts		
Model	Extended Height	Maximum Headload
4 section masts		
WT14-4	3.47 m	150.0 kg
WT60-4	6.00 m	140.0 kg
WT80-4	8.00 m	120.0 kg
WT100-4	10.00 m	100.0 kg
5 section masts		
WT21-5	5.77 m	85.0 kg
WT15-5	8.07 m	120.0 kg
WT7-5	12.07 m	90.0 kg
6 section masts		
WT50-6	5.00 m	100.0 kg
WT60-6	6.00 m	100.0 kg
WT75-6	7.50 m	90.0 kg
WT90-6	9.00 m	80.0 kg
WT100-6	10.00 m	75.0 kg
WT120-6	12.00 m	75.0 kg
WT5-6	15.37 m	70.0 kg
WT1-6	18.78 m	70.0 kg
WT10-6	21.47 m	60.0 kg
7 section masts		
WT65-7	6.50 m	65.0 kg
WT90-7	9.00 m	55.0 kg
WT120-7	12.00 m	50.0 kg
WT150-7	15.00 m	50.0 kg
WT180-7	18.00 m	50.0 kg
WT6-7	21.37 m	40.0 kg
8 section masts		
WT75-8	7.50 m	45.0 kg
WT11-8	9.27 m	45.0 kg
WT12-8	12.07 m	40.0 kg
WT150-8	15.00 m	35.0 kg
WT180-8	18.00 m	30.0 kg
WT9-8	20.07 m	30.0 kg
9 section masts		
WT90-9	9.00 m	20.0 kg
WT120-9	12.00 m	20.0 kg
WT16-9	13.87 m	15.0 kg
WT180-9	18.00 m	15.0 kg
WT26-9	26.07 m	12.0 kg
WT8-9	30.57 m	15.0 kg



- **QUALITY IN SUPPORT**
- **QUALITY IN CUSTOMER SERVICE**



Super Heavy-Weight Masts

XT Masts		
Model	Extended Height	Maximum Headload
4 section masts		
XT40-4	4.08 m	180.0 kg
XT60-4	6.08 m	170.0 kg
XT80-4	8.08 m	150.0 kg
XT100-4	10.00 m	130.0 kg
5 section masts		
XT50-5	5.08 m	160.0 kg
8 section masts		
XT6-8	6.08 m	130.0 kg
XT8-8	8.08 m	120.0 kg
XT10-8	10.08 m	120.0 kg
XT12-8	12.08 m	110.0 kg
XT15-8	15.08 m	80.0 kg
XT18-8	18.08 m	60.0 kg
XT26-8	26.08 m	55.0 kg
9 section masts		
XT90-9	9.00 m	90.0 kg
XT110-9	11.08 m	75.0 kg
XT140-9	14.08 m	65.0 kg
XT200-9	20.08 m	55.0 kg
XT300-9	30.08 m	50.0 kg

Trailer Masts		
Model	Extended Height	Maximum Headload
802/15	15.00 m	55.0 kg
802/21	21.00 m	40.0 kg
802/30	30.00 m	15.0 kg
804/15	15.00 m	80.0 kg
804/18	18.00 m	60.0 kg
804/26	26.00 m	50.0 kg
804/30S	30.00 m	40.0 kg

Military Masts

TYPE 73 Masts		
Model	Extended Height	Maximum Headload
73/10	10.00 m	75.0 kg
73/13	13.00 m	75.0 kg
73/16	16.00 m	70.0 kg
73/18	18.00 m	70.0 kg
73/20	20.00 m	60.0 kg
73/24	24.00 m	55.0 kg
73/30	30.00 m	50.0 kg

PU Series Masts		
Model	Extended Height	Maximum Headload
PU3	3,15 m	10.0 kg
PU5	5.00 m	10.0 kg
PU8	8.00 m	10.0 kg
PU10	10.00 m	10.0 kg
PU12	12,00 m	10.0 kg

SCAM Series Masts		
Model	Extended Height	Maximum Headload
SCAM 7	7.40 m	70.0 kg
SCAM 9	9.60 m	40.0 kg
SCAM 12	12.00 m	35.0 kg
SCAM 15	15.30 m	28.0 kg
SCAM 21	21.00 m	18.0 kg

Series 90 Masts		
Model	Extended Height	Maximum Headload
90/10	10.00 m	300.0 kg
90/16	16.00 m	280.0 kg
90/20	20.00 m	250.0 kg
90/24	24.00 m	230.0 kg
90/30	30.00 m	200.0 kg
90/40	40.00 m	100.0 kg

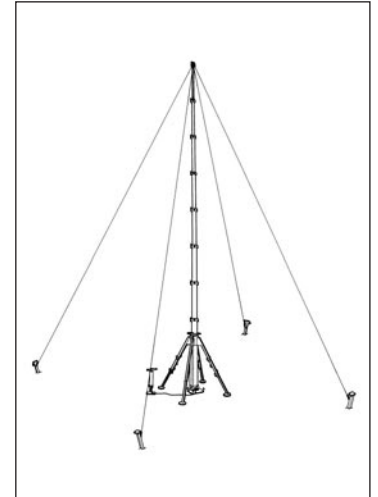


MAST MOUNTING

Every model in the Clark Masts range can either be ground, vehicle or shelter mounted. A comprehensive range of accessories is available for these installations. If the application requires specialist advice then please contact Clark Masts who can offer unrivalled experience in providing bespoke solutions.

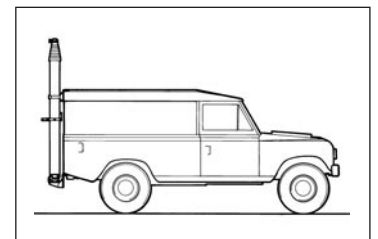
FIELD MOUNTED

For semi-permanent ground mounted applications a comprehensive range of accessories is available including lower, middle and upper Terylene and Kevlar guy assemblies, together with field leg assemblies and ground stakes. Guys allow automatic tensioning and enable the mast to be rotated to accommodate directional antennas without the need to redeploy each time the antenna direction is changed.



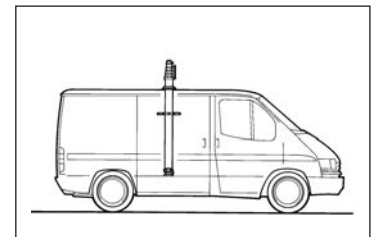
EXTERNAL VEHICLE AND SHELTER MOUNTING

External Mounting Brackets fitted to the outside of a vehicle or shelter allow the mast to be permanently fixed whilst providing full 360 degree rotation with a brake that can be locked when the antenna's direction needs to be set. The mast can be rotated fully when extended or retracted. A full range of Terylene and Kevlar guy assemblies can be supplied for this type of mounting. A range of hinged saddle clamps is available for semi-permanent installations which enable quick release of the whole mast.



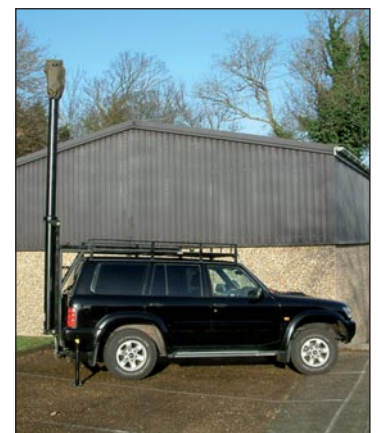
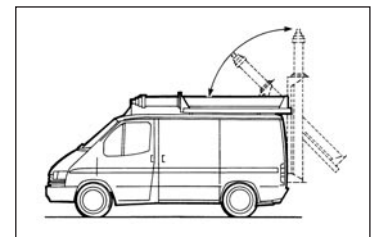
INTERNAL VEHICLE MOUNTING

This method of 'through the roof mounting' allows the mast to be installed within the vehicle or shelter. A weatherproof roof bearing is fitted to the vehicle that enables full rotation. An internal warning switch can be fitted to the mast that provides a safety device preventing the vehicle being moved whilst the mast is extended.



ROOF TROLLEY SYSTEM

This system allows a mast with a long retracted height to be stowed on the roof of the vehicle where the height would be too long to be fixed permanently in the vertical position. The roof trolley slides through a track and pivots from the horizontal to the vertical position and is then locked at the mast base allowing the mast then to be extended and deployed with guy ropes in the normal way. This system can accommodate telescopic masts up to extended heights of 34 metres.





Teksam Company Policy is to use only materials whose long life is assured beyond all doubt. In addition, all products are designed to enable repairs to be carried out using only standard tools. Availability of spare parts is guaranteed.

Individual technical leaflets are available on request for each Clark Masts product.

**CLARK
MASTS™**

All details in this publication are approximate and may be subject to change without any notice.

Distributor :

TEKSAM COMPANY NV, Woudstraat 21, 3600 Genk, Belgium
Tel : +32 (0)89 38 44 72 Fax : +32 (0)89 38 61 41 E-mail : info@teksamco.com Website : www.clarkmasts.be

Clark Masts is a division of Teksam Company NV

PP 2177/E NV MM 25/08/14

CLARK MASTS – FAST ERECTING MAST SYSTEMS